



PJ DICK  
TRUMBULL  
LINDY GROUP

---

**NOAH SHALTES,**  
**DIRECTOR OF SUSTAINABILITY**  
November 2025





**ASPHALT SUPPLY  
CONCRETE SUPPLY  
PAVING, BRIDGE,  
AND UTILITY  
CONSTRUCTION**

Lindy Paving is the only **SIX-TIME winner** of the prestigious Sheldon G. Hayes Award, the National Asphalt Paving Association's highest honor, for **QUALITY** pavement.



- 11 asphalt plants
- 2 million+ tons asphalt produced annually



- 5 concrete plants, 3 mobile batch plants
- 310,000 cy concrete produced/delivered annually



**SealMaster®**



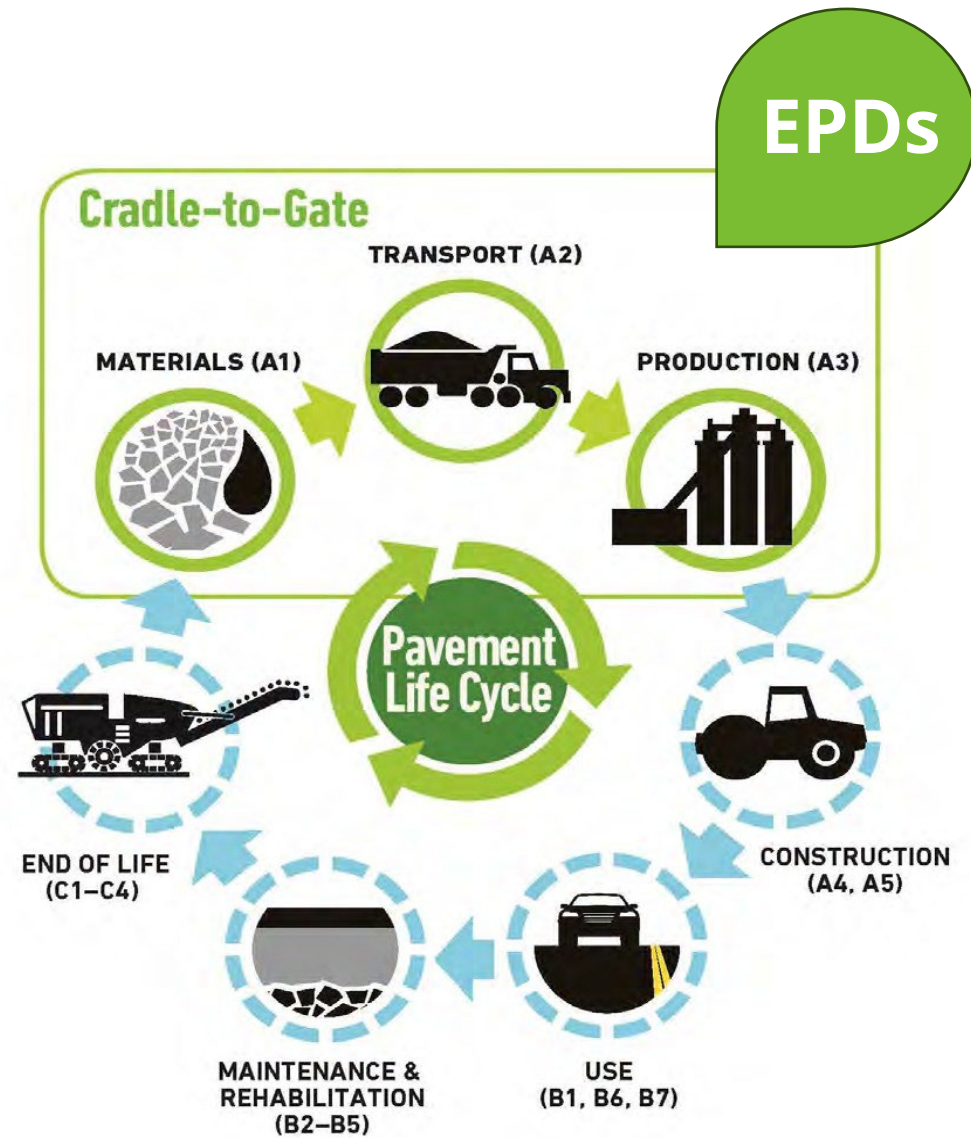
# The Road Forward

A Vision for Net Zero Carbon Emissions  
for the Asphalt Pavement Industry



**VISION:** Sustainable communities and commerce, connected by net zero carbon emission asphalt pavements

**MISSION:** Engage, educate, and empower the U.S. asphalt community to produce and construct net zero carbon emission asphalt pavements





- Low-carbon aggregate
- Low-carbon asphalt
- **Low-carbon concrete**
- Low-carbon sealer



# EPDs HELP US BENCHMARK

## COMPARE BY MANUFACTURER



EPD ENVIRONMENTAL PRODUCT DECLARATION

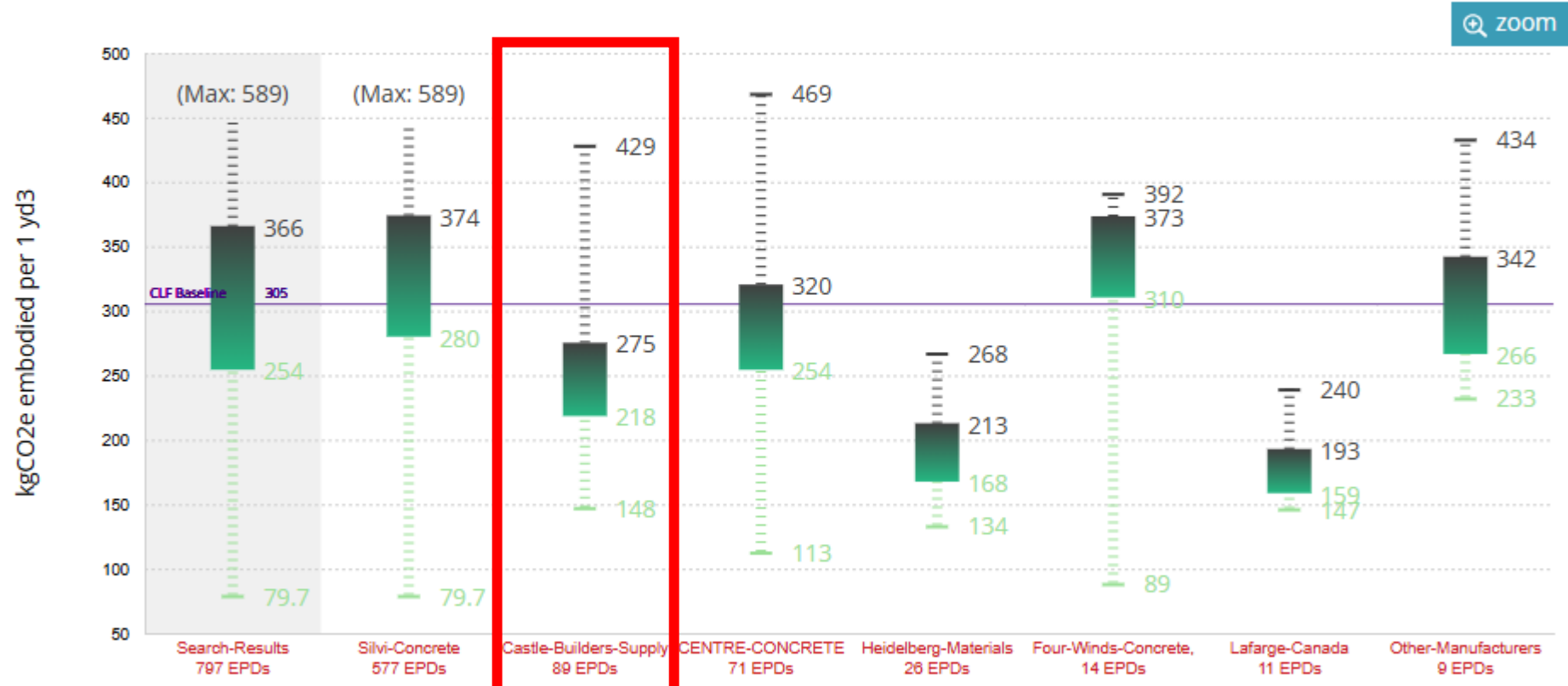
LCIA Method: TRACI 2.1 AND **Jurisdiction: USA|PA** AND Valid after: 2025-10-29 AND EPD Type: Product EPDs OR Industry EPDs  
 AND Lightweight - No

READY- MIXED CONCRETE PRODUCED: CASTLE BUILDERS SUPPLY

FACILITY: New Castle  
 STRENGTH: 3000 psi @ 28 days  
 MIX NAME: 60NA002

IMPACT INDICATOR		PER YD3	PER M3
Global Warming Potential	kg CO2e	169.06	221.12
Ozone Depletion	kg CFC11e	5.60E-06	7.32E-06
Acidification	kg SO2e	0.48	0.63
Eutrophication	kg Ne	0.26	0.34
SFP (Smog)	kg O3e	8.97	11.74
Non-renew. energy	MJ, NCV	1033.66	1351.98

GENERAL INFORMATION	
Declared Product	Ready - Mixed Concrete produced by Castle Builders Supply
Date of Issue and EPD Number	January 09, 2024 NRMCA EPD #20127
Period of Validity	5 years, 12/21/2028
EPD Holder	Castle Builders Supply 1807 Shenango Road, New Galilee, PA 16141
Program Operator	National Ready Mix Concrete Association 66 Canal Center Plaza, Suite 250, Alexandria, VA 22314
LCA and EPD Developer	WAP Sustainability Consulting 1701 Market Street Chattanooga, TN 37408 www.wapsustainability.com
Core PCR	ISO 21930:2017 Sustainability in Building Construction - Environmental Declaration of Building Products
Sub-category PCR	NSF International Product Category Rule (PCR) for Concrete Version 2.2 (December 2022), Verified by Thomas P. Gloria, Ph.D., Industrial Ecology Consultants
Independent LCA Reviewer and EPD Verifier	Independent verification of the declaration and data, according to ISO 21930:2017 and ISO 14025:2008 <input type="checkbox"/> Internal <input checked="" type="checkbox"/> External Thomas P. Gloria, PhD Industrial Ecology Consultants
For Additional Explanatory Material	Manufacture Representative: Noah Shaltes (noah.shaltes@castlebuildersupply.com) Software Tool: Theta by WAP Sustainability Consulting V.1.0.
The declared product meets the following product specifications:	Disclaimer: EPDs are comparable only if they comply with this document. Use the



# THE ROAD TO CBS'S LOW CARBON CONCRETE



## EDUCATE

Re-education of customers, engineers and contractors to understand nuances of low-carbon concrete.



## INNOVATE

Develop technologies and advanced manufacturing equipment & methodologies to design and deliver low-carbon mixes.



## EVOLVE

Teaming with clients, engineers, and contractors to design, manufacture and install products that achieve project sustainability goals.



PJ DICK  
TRUMBULL  
THE LINDY GROUP